

## MULTIPLE COMPONENT UNITS

TM

A Multiple Component Unit (MCU) is a group of individual Windows and/or Doors with separate jambs that are attached together to achieve a varied appearance and operating function for specific applications. The difference between an MCU and a pair of sash or doors in a SINGLE jamb is that the MCU includes separate Jambs for each SINGLE UNIT and it is the Jambs that are attached. Vertical Jamb Sides that are attached are called MULLIONS. Horizontal Jamb Sides that are attached are called SILL-TO-HEADERS (STH). Refer to Woodstone's Glossary Of Terms and Sample Specification Document for more information and detail.

Pairs of Sash or Doors, on the other hand, are assembled within one Jamb. A pair of doors, for example, has an Astragal interlock instead of Mullion. A Pair of Sash in a Double Hung Window has a Check Rail or Meeting Rail instead of a Sill-To-Header.

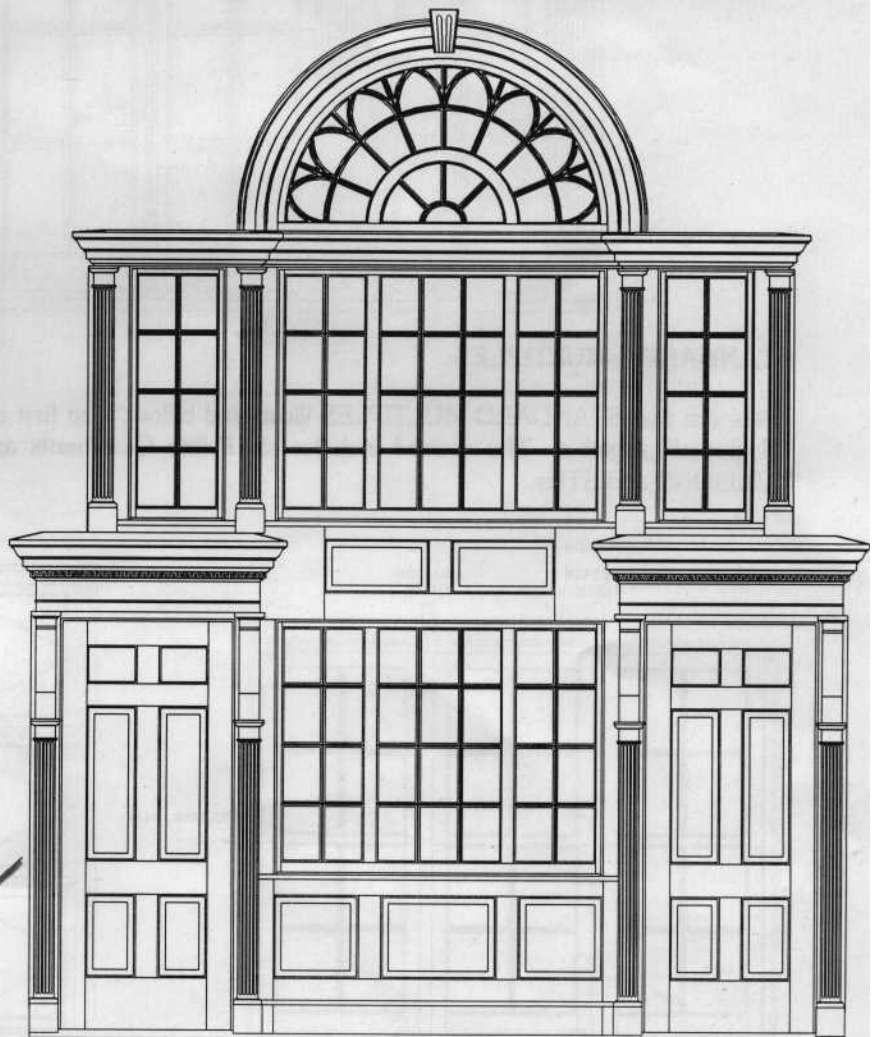
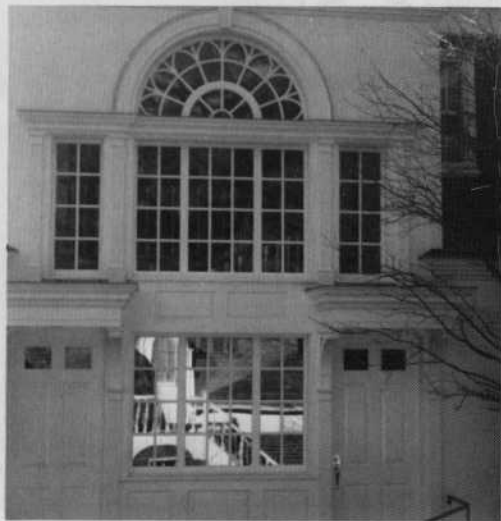
### ENTRANCES:

The most common MCUs are Entrances, Palladians and Standard Multiples. There are three ENTRANCES in the following illustrations. The first entrance, pictured to the right, includes a Raised Panel and Multilite INSULCORE Door with two Fixed Multilite Sidelites, a Straight Multilite Transom and a simple two piece Cornice.

The second entrance, pictured at the top of the next page, includes a PAIR of Elliptical Arched Top Multilite Doors with two SINGLE Multilite Sidelites (one on either side) and a SINGLE Elliptical Arched Multilite Transom all with standard flat exterior casing. The glass is genuine true divided lites with individual insulating glass.

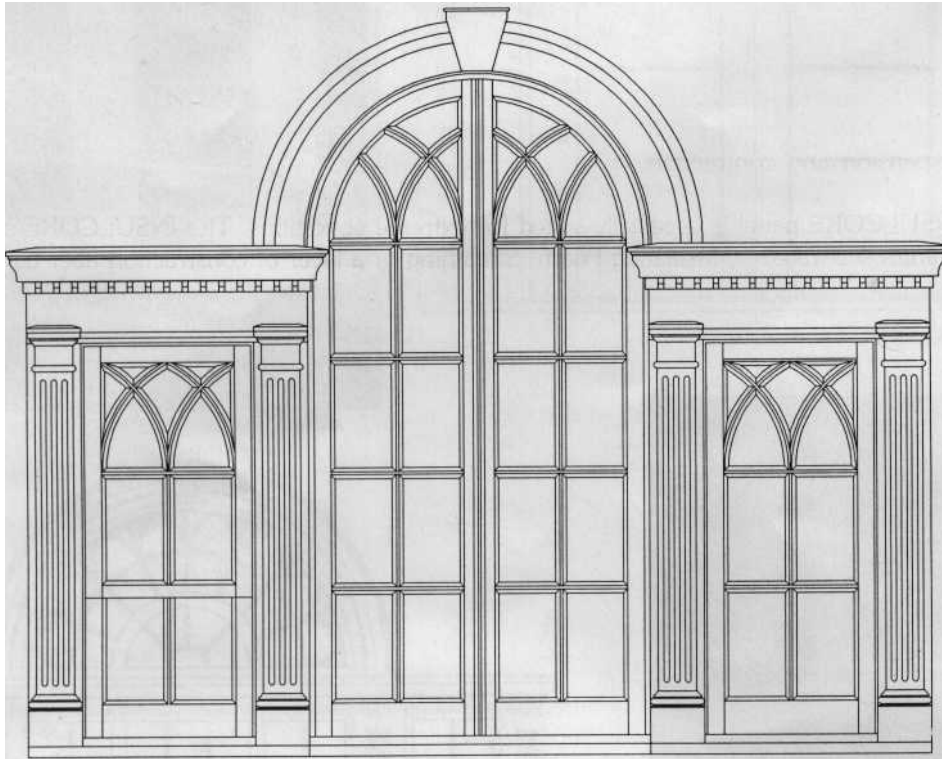
The third entrance, also pictured on the next page (bottom), is more complex and includes stacked Raised Panel Facades between Multilite Casements capped by an intricate Fanlite Transom and flanked by combination Multiple Raised Panel/Two Lite Doors on the lower level with Multiple Casement flankers on the second level. This entrance also displays an intricate combination of Architectural Trim including Fluted Columns, an Entablature of Cornice, Frieze and Architrave with Dentil Blocking and Arched Trim with a Key over the Fanlite.





## THE WOODSTONE PALLADIAN

This PALLADIAN is the Woodstone Cherry Sample that is featured on the cover and in the Specification, Pricing & Ordering Procedures. The PALLADIAN includes a SINGLE Weight & Pulley Multilite Double Hung Sidelite on the left (actually a PAIR of Sash in one Jamb), a SINGLE Outswing Multilite Casement Sidelite on the right and a PAIR of Inswing Multilite Arched Top Doors (again, the doors are a PAIR of Doors in one Jamb) in the center. The upper section of the Multilite Format includes Transverse Arc Segments.



### STANDARD MULTIPLES:

There are two STANDARD MULTIPLES illustrated below. The first includes three Double Hung Sash & Jamb "Mullioned" together. The second includes six Fulllite Casements and three Fulllite Fixed Sash attached with MULLIONS and STHs.

